

IMAGE INFORMATION:

Image Description	Gastropods found in the CH2001-9 core, drive 4. Core located in the meadow across the road from DjOn-26 the "Stampede Site".	
Photographer	David Keller	
Date Photo Taken		
Orientation		
Original Format	JPG	
Copyright		

PHOTO DESCRIPTION:

Country	Canada
Province/State	Alberta
Area	Cypress Hills
Decimal Lat.	
Decimal Long.	
Site Name	
Borden Number	
Time Frame	Holocene
Ethnicity	

PHOTO CLASSIFICATION:

Step #1	Alberta
Step #2	Cypress Hills
Step #3	Coring
Step #4	Cores
Step #5	Molluscs
Description	CH2001-9 core, drive 4.

DATABASE MANAGER

Alwynne Beaudoin

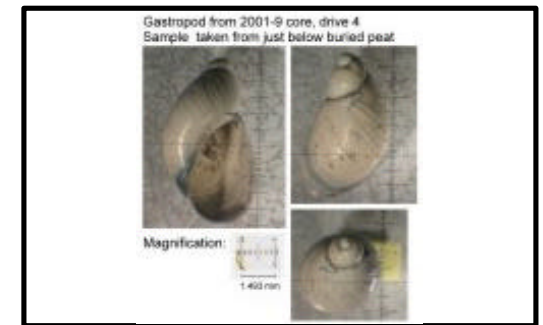
SCAPE Photo Collection**IMAGE:****CATALOGUE INFORMATION:**

Photo ID	QE.2003.P0045
Field Catalogue Number	
Other Catalogue Number	
Other Catalogue Information	
Museum/Display	
Collection	

IMAGE COLLECTION INFORMATION:

CD Volume	EPIC 2
Image Directory	Alberta \ Cypress Hills \ Coring \ Cores \ Molluscs
Image File Name	gastropod2
Hard Copy Held By	PMA
Hard Copy Location	Alwynne Beaudoin
Digital Copy Held By	PMA
Digital Copy Location	Alwynne Beaudoin

RECORD INFORMATION:

Date Created	19 December 2003
Creator Name	Jennifer Petrik

DATE GENERATED

IMAGE INFORMATION:

Image Description	Picture 7/14 from the EWL-5 core. The core is located in the east basin of Elkwater Lake. It is a Reasoner core.	
Photographer	David Keller	
Date Photo Taken		
Orientation		
Original Format	JPG	
Copyright		

PHOTO DESCRIPTION:

Country	Canada
Province/State	Alberta
Area	Elkwater Lake
Decimal Lat.	49.66849208
Decimal Long.	-110.28945216
Site Name	
Borden Number	
Time Frame	Holocene
Ethnicity	

PHOTO CLASSIFICATION:

Step #1	Alberta
Step #2	Cypress Hills
Step #3	Coring
Step #4	Cores
Step #5	Lake
Description	EWL-5 core.....

DATABASE MANAGER

Alwynne Beaudoin

SCAPE Photo Collection

IMAGE:

**CATALOGUE INFORMATION:**

Photo ID	QE.2003.P0117
Field Catalogue Number	
Other Catalogue Number	
Other Catalogue Information	
Museum/Display	
Collection	

IMAGE COLLECTION INFORMATION:

CD Volume	EPIC 2
Image Directory	Alberta \ Cypress Hills \ Coring \ Cores \ Lake \ EWL5
Image File Name	EWL-5_pic7of14
Hard Copy Held By	PMA
Hard Copy Location	Alwynne Beaudoin
Digital Copy Held By	PMA
Digital Copy Location	Alwynne Beaudoin

RECORD INFORMATION:

Date Created	19 December 2003
Creator Name	Jennifer Petrik

DATE GENERATED

IMAGE INFORMATION:

Image Description	Field crew using the Livingstone corer method to core the east basin of Elkwater Lake.	
Photographer	Unknown	
Date Photo Taken	February 2002	
Orientation	N	
Original Format	Colour Print	
Copyright		

PHOTO DESCRIPTION:

Country	Canada
Province/State	Alberta
Area	Elkwater Lake
Decimal Lat.	49.66
Decimal Long.	-110.28
Site Name	
Borden Number	
Time Frame	
Ethnicity	

PHOTO CLASSIFICATION:

Step #1	Alberta
Step #2	Cypress Hills
Step #3	Coring
Step #4	Crew
Step #5	Lake
Description	EWL - (?) core.....

DATABASE MANAGER

Alwynne Beaudoin

SCAPE Photo Collection

IMAGE:

**CATALOGUE INFORMATION:**

Photo ID	QE.2003.P0126
Field Catalogue Number	
Other Catalogue Number	
Other Catalogue Information	
Museum/Display	
Collection	

IMAGE COLLECTION INFORMATION:

CD Volume	EPIC 2
Image Directory	Alberta \ Cypress Hills \ Coring \ Crew \ Lake
Image File Name	elkwater2
Hard Copy Held By	PMA
Hard Copy Location	Alwynne Beaudoin
Digital Copy Held By	PMA
Digital Copy Location	Alwynne Beaudoin

RECORD INFORMATION:

Date Created	19 December 2003
Creator Name	Jennifer Petrik

DATE GENERATED

IMAGE INFORMATION:

Image Description	South and west walls of the DjOn-26 main excavation pit, showing the areas where pollen samples were removed in May of 2001 by Alwynne Beaudoin. Pic 1/2.
Photographer	Tim Panas
Date Photo Taken	May 2001
Orientation	SW
Original Format	TIFF
Copyright	

PHOTO DESCRIPTION:

Country	Canada
Province/State	Alberta
Area	Cypress Hills
Decimal Lat.	
Decimal Long.	
Site Name	Stampede Site
Borden Number	DjOn-26
Time Frame	
Ethnicity	

PHOTO CLASSIFICATION:

Step #1	Alberta
Step #2	Cypress Hills
Step #3	Stampede Site
Step #4	Excavation Pit
Step #5	Pollen Sampling
Description	South and west walls of pit.....

DATABASE MANAGER Alwynne Beaudoin
SCAPE Photo Collection**IMAGE:****CATALOGUE INFORMATION:**

Photo ID	QE.2003.P0133
Field Catalogue Number	
Other Catalogue Number	
Other Catalogue Information	
Museum/Display	
Collection	

IMAGE COLLECTION INFORMATION:

CD Volume	EPIC 2
Image Directory	Alberta \ Cypress Hills \ Stampede Site \ Excavation Pit \ Pollen Sampling
Image File Name	Sampling (south-west corner) Wall pic1of2
Hard Copy Held By	PMA
Hard Copy Location	Alwynne Beaudoin
Digital Copy Held By	PMA
Digital Copy Location	Alwynne Beaudoin

RECORD INFORMATION:

Date Created	19 December 2003
Creator Name	Jennifer Petrik

DATE GENERATED

IMAGE INFORMATION:

Image Description	Asteraceae <i>Gaillardia aristata</i> Pursh. / Gaillardia (40x magnification; 1ocular unit=2.4um). Sample was collected on 13/07/2000 in open conifer woods along the Cypress Hills Bench road between Elkwater and Reesor Lake.	
Photographer	David Keller	
Date Photo Taken	May 24-28 2002	
Orientation	N/A	
Original Format	JPG	
Copyright		

PHOTO DESCRIPTION:

Country	Canada
Province/State	Alberta
Area	Cypress Hills
Decimal Lat.	49.66528
Decimal Long.	-110.26111
Site Name	
Borden Number	
Time Frame	
Ethnicity	

PHOTO CLASSIFICATION:

Step #1	Alberta
Step #2	Cypress Hills
Step #3	Pollen
Step #4	Plant Samples
Step #5	
Description	Asteraceae <i>Gaillardia aristata</i> Pursh. / Gaillardia.....

DATABASE MANAGER

Alwynne Beaudoin

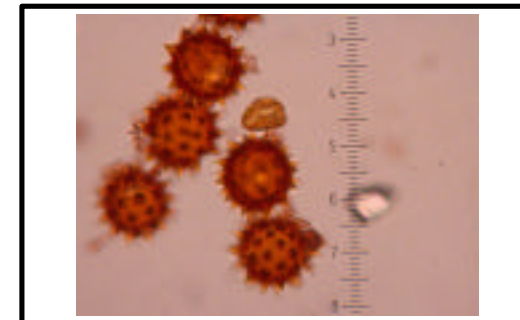
**SCAPE Photo
Collection****IMAGE:****CATALOGUE INFORMATION:**

Photo ID	QE.2003.P0254
Field Catalogue Number	
Other Catalogue Number	R819
Other Catalogue Information	Reference Pollen Collection managed by Alwynne Beaudoin of the PMA.
Museum/Display	
Collection	Reference Pollen Collection managed by Alwynne Beaudoin of the PMA.

IMAGE COLLECTION INFORMATION:

CD Volume	EPIC 2
Image Directory	Alberta \ Cypress Hills \ Pollen \ Plant Samples
Image File Name	Dscn0849
Hard Copy Held By	PMA
Hard Copy Location	Alwynne Beaudoin
Digital Copy Held By	PMA
Digital Copy Location	Alwynne Beaudoin

RECORD INFORMATION:

Date Created	19 December 2003
Creator Name	Jennifer Petrik

DATE GENERATED

IMAGE INFORMATION:

Image Description	Lamiaceae <i>Agastache foeniculum</i> (Pursh) Ktze. / Giant hyssop. (40x magnification: 1 ocular unit = 2.4um). Sample was taken on 19/07/2000, along the road on the first terrace down from the site, and downhill from the gravel pit.	
Photographer	David Keller	
Date Photo Taken	May 24-28 2002	
Orientation	N/A	
Original Format	JPG	
Copyright		

PHOTO DESCRIPTION:

Country	Canada
Province/State	Saskatchewan
Area	The Forks
Decimal Lat.	
Decimal Long.	
Site Name	
Borden Number	
Time Frame	
Ethnicity	

PHOTO CLASSIFICATION:

Step #1	Saskatchewan
Step #2	The Forks
Step #3	Pollen
Step #4	Plant Samples
Step #5	
Description	Lamiaceae <i>Agastache foeniculum</i> (Pursh) Ktze. / Giant hyssop.

DATABASE MANAGER

Alwynne Beaudoin

SCAPE Photo Collection**IMAGE:****CATALOGUE INFORMATION:**

Photo ID	QE.2003.P0326
Field Catalogue Number	15
Other Catalogue Number	R858
Other Catalogue Information	Reference Pollen Collection managed by Alwynne Beaudoin of the PMA.
Museum/Display	
Collection	Reference Pollen Collection managed by Alwynne Beaudoin of the PMA.

IMAGE COLLECTION INFORMATION:

CD Volume	EPIC 2
Image Directory	Saskatchewan \ The Forks \ Pollen \ Plant Samples
Image File Name	Dscn1016
Hard Copy Held By	PMA
Hard Copy Location	Alwynne Beaudoin
Digital Copy Held By	PMA
Digital Copy Location	Alwynne Beaudoin

RECORD INFORMATION:

Date Created	19 December 2003
Creator Name	Jennifer Petrik

DATE GENERATED

IMAGE INFORMATION:

Image Description	Picture of <i>Picea glauca</i> wing found at the base of the CL-1 core. Core extracted from Candle Lake in central Saskatchewan on 05/03/2002 at waypoint 157. This sample has been submitted for AMS dating.	
Photographer	David Keller	
Date Photo Taken		
Orientation	N/A	
Original Format	JPG	
Copyright		

PHOTO DESCRIPTION:

Country	Canada
Province/State	Saskatchewan
Area	Candle Lake
Decimal Lat.	53.81439328
Decimal Long.	-105.3014822
Site Name	
Borden Number	
Time Frame	Holocene
Ethnicity	

PHOTO CLASSIFICATION:

Step #1	Saskatchewan
Step #2	Candle Lake Area
Step #3	Candle Lake
Step #4	Base of Core Samples
Step #5	Seeds
Description	<i>Picea glauca</i> wing

DATABASE MANAGER

Alwynne Beaudoin

SCAPE Photo Collection

IMAGE:

**CATALOGUE INFORMATION:**

Photo ID	QE.2003.P0412
Field Catalogue Number	
Other Catalogue Number	
Other Catalogue Information	
Museum/Display	
Collection	

IMAGE COLLECTION INFORMATION:

CD Volume	EPIC 2
Image Directory	Saskatchewan \ Candle Lake Area \ Candle Lake \ Base of Core Samples \ Seeds
Image File Name	Picea glauca seed02
Hard Copy Held By	PMA
Hard Copy Location	Alwynne Beaudoin
Digital Copy Held By	PMA
Digital Copy Location	Alwynne Beaudoin

RECORD INFORMATION:

Date Created	19 December 2003
Creator Name	Jennifer Petrik

DATE GENERATED

IMAGE INFORMATION:

Image Description	Picture of the Insect parts found in the bulk samples from the CL-1 core. Core extracted from Candle Lake in central Saskatchewan on 05/03/2002 at waypoint 157.	
Photographer	David Keller	
Date Photo Taken		
Orientation	N/A	
Original Format	JPG	
Copyright		

PHOTO DESCRIPTION:

Country	Canada
Province/State	Saskatchewan
Area	Candle Lake
Decimal Lat.	53.81439328
Decimal Long.	-105.3014822
Site Name	
Borden Number	
Time Frame	Holocene
Ethnicity	

PHOTO CLASSIFICATION:

Step #1	Saskatchewan
Step #2	Candle Lake Area
Step #3	Candle Lake
Step #4	Bulk Core Samples
Step #5	Macros
Description	Insect parts.....

DATABASE MANAGER

Alwynne Beaudoin

SCAPE Photo Collection**IMAGE:****CATALOGUE INFORMATION:**

Photo ID	QE.2003.P0413
Field Catalogue Number	
Other Catalogue Number	
Other Catalogue Information	
Museum/Display	
Collection	

IMAGE COLLECTION INFORMATION:

CD Volume	EPIC 2
Image Directory	Saskatchewan \ Candle Lake Area \ Candle Lake \ Bulk Core Samples \ Macros
Image File Name	Insect parts
Hard Copy Held By	PMA
Hard Copy Location	Alwynne Beaudoin
Digital Copy Held By	PMA
Digital Copy Location	Alwynne Beaudoin

RECORD INFORMATION:

Date Created	19 December 2003
Creator Name	Jennifer Petrik

DATE GENERATED

IMAGE INFORMATION:

Image Description	Saskatchewan sunset. Taken at the field camp located in the Birch Hills in the summer of 2002.
Photographer	David Keller
Date Photo Taken	
Orientation	W
Original Format	Unknown
Copyright	

PHOTO DESCRIPTION:

Country	Canada
Province/State	Saskatchewan
Area	Birch Hills
Decimal Lat.	
Decimal Long.	
Site Name	
Borden Number	
Time Frame	
Ethnicity	

PHOTO CLASSIFICATION:

Step #1	Saskatchewan
Step #2	Birch Hills
Step #3	Field Camp
Step #4	Landscape
Step #5	
Description	Sunset.....

DATABASE MANAGER

Alwynne Beaudoin

SCAPE Photo Collection

IMAGE:

**CATALOGUE INFORMATION:**

Photo ID	QE.2003.P0445
Field Catalogue Number	
Other Catalogue Number	
Other Catalogue Information	
Museum/Display	
Collection	

IMAGE COLLECTION INFORMATION:

CD Volume	EPIC 2
Image Directory	Saskatchewan \ Birch Hills \ Field Camp \ Landscape
Image File Name	sunset
Hard Copy Held By	PMA
Hard Copy Location	Alwynne Beaudoin
Digital Copy Held By	PMA
Digital Copy Location	Alwynne Beaudoin

RECORD INFORMATION:

Date Created	19 December 2003
Creator Name	Jennifer Petrik

DATE GENERATED

IMAGE INFORMATION:

Image Description	The Stampede Site field camp including the Geo Team from UWEC at the Dew Drop Inn, along the Grayburn Gap road. Photo taken in the early morning.	
Photographer	Alwynne Beaudoin	
Date Photo Taken	July 13 2000	
Orientation	W	
Original Format	Colour Slide	
Copyright		

PHOTO DESCRIPTION:

Country	Canada
Province/State	Alberta
Area	Cypress Hills
Decimal Lat.	
Decimal Long.	
Site Name	
Borden Number	
Time Frame	
Ethnicity	

PHOTO CLASSIFICATION:

Step #1	Alberta
Step #2	Cypress Hills
Step #3	Field Camp
Step #4	Camp
Step #5	
Description	The Dew Drop Inn.....

DATABASE MANAGER

Alwynne Beaudoin

SCAPE Photo Collection

IMAGE:

**CATALOGUE INFORMATION:**

Photo ID	QE.2003.P0455
Field Catalogue Number	
Other Catalogue Number	ABB-2000-R1-F10
Other Catalogue Information	This is frame #10 in the 2000 (year) roll #1 set of slides.
Museum/Display	
Collection	

IMAGE COLLECTION INFORMATION:

CD Volume	EPIC 2
Image Directory	Alberta \ Cypress Hills \ Field Camp \ Camp
Image File Name	2000R1P10
Hard Copy Held By	PMA
Hard Copy Location	Alwynne Beaudoin
Digital Copy Held By	PMA
Digital Copy Location	Alwynne Beaudoin

RECORD INFORMATION:

Date Created	19 December 2003
Creator Name	Jennifer Petrik

DATE GENERATED

IMAGE INFORMATION:

Image Description	Grayburn United Church on the south east corner of the intersection of secondary highway 515. and Grayburn Road.
Photographer	Alwynne Beaudoin
Date Photo Taken	May 21 2001
Orientation	NW
Original Format	Colour Slide
Copyright	

PHOTO DESCRIPTION:

Country	Canada
Province/State	Alberta
Area	Cypress Hills
Decimal Lat.	
Decimal Long.	
Site Name	
Borden Number	
Time Frame	Historic
Ethnicity	

PHOTO CLASSIFICATION:

Step #1	Alberta
Step #2	Cypress Hills
Step #3	Historic
Step #4	Buildings
Step #5	Churches
Description	Grayburn United Church.....

DATABASE MANAGER

Alwynne Beaudoin

SCAPE Photo Collection

IMAGE:

**CATALOGUE INFORMATION:**

Photo ID	QE.2003.P0568
Field Catalogue Number	
Other Catalogue Number	ABB-2001-R1-F19
Other Catalogue Information	This is frame #19 in the 2001 (year) roll #1 set of slides.
Museum/Display	
Collection	

IMAGE COLLECTION INFORMATION:

CD Volume	EPIC 2
Image Directory	Alberta \ Cypress Hills \ Historic \ Buildings \ Churches
Image File Name	2001R1P19
Hard Copy Held By	PMA
Hard Copy Location	Alwynne Beaudoin
Digital Copy Held By	PMA
Digital Copy Location	Alwynne Beaudoin

RECORD INFORMATION:

Date Created	19 December 2003
Creator Name	Jennifer Petrik

DATE GENERATED